

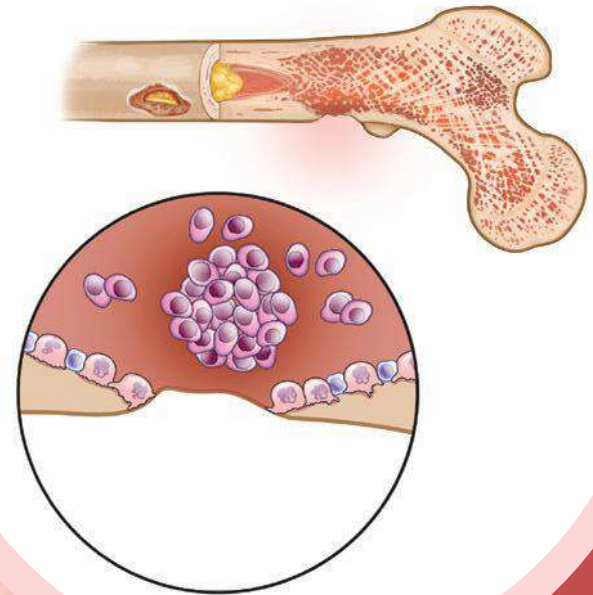
Laboratory Testing In Myeloma SPE/IFE/BJP URINE/ FLC



Thursday, September 25th, 2025



4:00 pm to 6:00 pm IST



CHIEF GUEST



DR KUNAL SEHGAL

Consultant Haemato-Pathologist,
Flow Cytometrist Director- Neuberger Sehgal Path Lab, Mumbai

SPEAKERS



The Harmonization of Biomarker Reports of Monoclonal Gammopathies

DR BARNALI DAS

Lead Consultant, Biochemistry Immunology & Toxicology,
Kokilaben Dhirubhai Ambani Hospital
& Medical Research Institute, Mumbai



Serum Protein Electrophoresis : More Than Just Monoclonal Mysteries

DR ANUJ PRAKASH

Associate Director and HOD of Biochemistry,
MEDANTA -THE MEDICITY

ORGANIZING SECRETARY



DR MAMTA KANKRA

Organizing Secretary, CAHO DD, CDE
Senior Consultant Department of Biochemistry,
Quality Manager Clinical Laboratory Services,
Sir Ganga Ram Hospital, New Delhi

MODERATOR



DR ANAM FATIMA SIDDIQUI

Lab Head & Consultant Pathologist,
American Institute of Pathology
and Lab Sciences (AMPATH),
Lucknow

CDE-93

CAHO DIAGNOSTIC DIVISION



Dr. Aparna Jairam
Chairperson

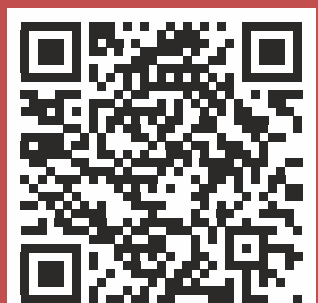


Dr. R Ravikumar
Vice Chairperson



Dr. Vinita Kothari
Secretary

REGISTER NOW



HIGHLIGHTS

- ✓ Key tests are Serum Protein Electrophoresis (SPEP) and Immunofixation Electrophoresis (IFE) to identify the abnormal protein, Serum Free Light Chain Assay (SFLC) to detect small light chains, and a Complete Blood Count (CBC) to check for anemia or other cell abnormalities. A bone marrow biopsy provides a direct look at plasma cell levels and genetic changes, while blood chemistry tests (like calcium, creatinine, and albumin) and urinalysis help assess organ damage and disease progression.



+91-9971575552



www.caho.in



diagnostic@caho.in